

## Tillsonburg Community Centre – Construction Update

### August 2024

Construction further progressed through the month of August.

Exterior aluminum cladding installation has continued at the south and west façade and main entrance canopy. The brick veneer work is also nearing completion.

Interior aluminum curtain wall framing installation and elevator installation have begun. Interior wall and bulkhead steel stud framing and drywall installation are moving along, and wall painting has commenced within the new addition. Mortar bed build-up within the accessible/family change room and pool deck floor tile areas is continuing. Fireproofing for the second floor supporting structure is nearing completion and HVAC, electrical, plumbing and sprinkler work within the new addition and existing renovated areas are continuing.

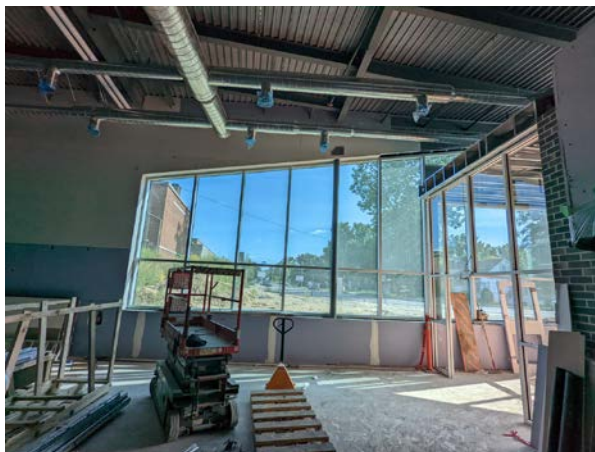
Public access to the Health Club has been reinstated for the beginning of September, while the adjacent Health Club washroom and sauna area is temporarily closed off as work continues; demolition work appears complete, and the finishing work has commenced.



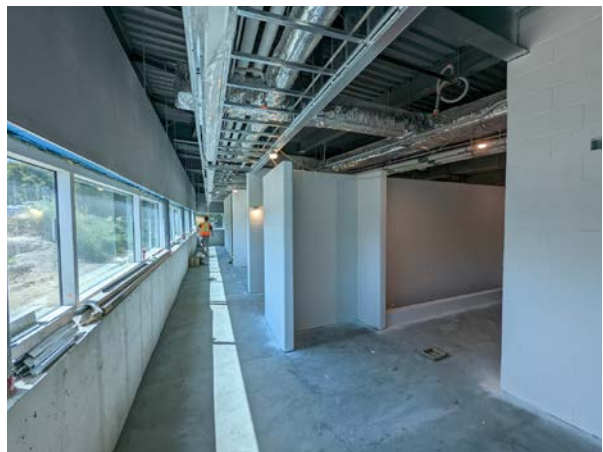
Exterior: View towards the north (south entrance from Hardy Ave.)



Exterior: View towards the south entrance



Interior: View towards the south (within the main lobby)



Interior: View towards the west (within the accessible/family change room)



*Interior: Kinsmen Pool work in progress*



*Interior: Health Club renovated area in progress*

#### **Anticipated work for September 2024:**

- Exterior aluminum siding installation will be nearing completion
- Site works will continue
- Steel stud framing and drywall installation will be nearing completion
- Brick work will be nearing completion
- Fireproofing will continue
- Elevator installation will continue
- Mechanical, electrical, plumbing and sprinkler work will continue
- Ceiling assembly installation will continue
- Painting will continue
- Interior aluminum curtain wall framing and glazing will continue
- Mortar bed build-up / flooring assembly will continue
- Health Club renovation work will continue

---

a+LiNK Architecture Inc. will continue to provide monthly construction updates on the Tillsonburg Community Centre Addition.